

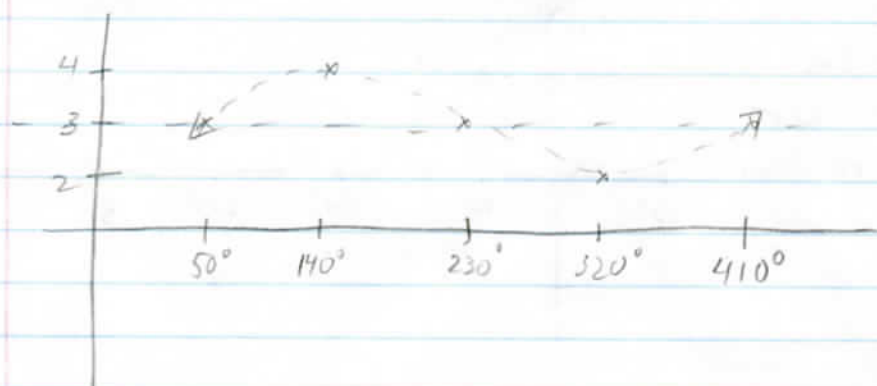
X scale can be 'counted' on unit circle

p. 250

1. a. $y = \sin(x - 50^\circ) + 3$

c \rightarrow shift right 50°
d \rightarrow shift up 3

(b) per = 360°
a = 1
no ref



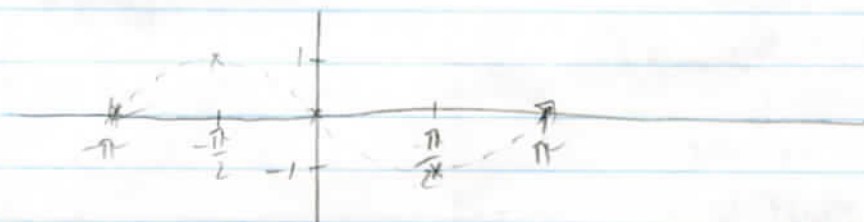
quad = 90°

b. $y = \sin(x + \pi)$

c \rightarrow shift left π
d \rightarrow sin ax y = 0

b \rightarrow per = 2π
a = 1

quad = $\frac{\pi}{2}$



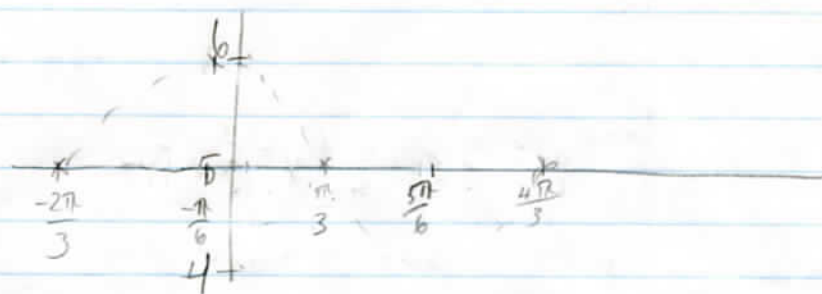
* (c.) $y = \sin(x + \frac{2\pi}{3}) + 5$
quad = $\frac{\pi}{2}$

a = 1

b = 1 per = 2π

c = $\frac{2\pi}{3}$ shift left

d = 5 shift up



quad = $\frac{\pi}{2}$

checked on wplot